



TARGA FLEET COMMERCIAL HIRE

Total Control Experience:
control, profitability, security.

Solution dedicated to commercial companies hiring building machinery out:
trucks, lifters, cranes and earthmoving machinery.



+ CONTROL

Your vehicles are always under control: where they are, what state they are in.

- COSTS

Increase the profitability of your hiring out by over **40%**

+ SECURITY

Prevent theft and misuse and recover stolen vehicles

Your needs

- › Controlling the position of the vehicles in real time and receiving alarms in case of exit from the assigned areas
- › Monitoring consumption and use parameters: km and hours of use (power take-offs)
- › Planning the vehicle scheduled maintenance (automatic alerts when the hour or kilometre threshold is reached)

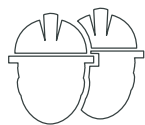
Our solution

- › Recovery of the stolen vehicles thanks to the Operations Center, available 24/7 and connected to the Police
- › Certification and reporting of the activity carried out towards customers (position/date) with weekly and monthly reports and calculation of the hours worked on public holidays for the automatic invoicing of extra hours

HOW IT WORKS



Thanks to the installation on board vehicles of a GPRS/SMS GPS (black box), it is possible to know in real time the position and other data (speed, driver, entry/exit from pre-defined areas), consulting a web-based app available on smartphones and tablets too.



SECURITY

Your needs

- › Preventing accidents on the work sites
- › Having certified documentation in case of accidents
- › Preventing vehicle misuse

Our solution

- › Correct monitoring of vehicle maintenance
- › Analytical reports on the vehicle status and possible accidents
- › Complete information on the vehicle use



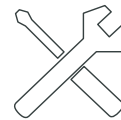
REAL-TIME TRACKING

Your needs

- › Preventing the risk of abuse, misappropriation and theft
- › Ensuring compliance with the hiring contractual terms
- › Receiving alarms connected with risky events

Our solution

- › Monitoring vehicle position and condition in real time
- › Immediate event alerts
- › 24/24 Consultation via mobile app



MAINTENANCE MANAGEMENT

Your needs

- › Planning maintenance
- › Recording interventions carried out
- › Preventing vehicle downtime due to poor maintenance
- › Preventing vehicle deterioration and incorrect depreciation

Our solution

- › Planning maintenance according to the vehicle hire calendar
- › Planning maintenance in compliance with regulations
- › Automatic alerts when the hour/km threshold is reached
- › Recording and history of all maintenance works



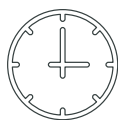
SATELLITE ANTI-THEFT DEVICE

Your needs

- › 24/7 support in case of critical issues concerning the vehicles
- › Monitoring movements with the engine off
- › Being quickly connected to the Police

Our solution

- › Receipt of alarms via internet, email, SMS
- › Blocking/releasing engines from a remote position
- › Alarms for towing/transfers
- › 24/7 Operations Center, connected to the Police



REPORTING ACTIVITY HOURS & POWER-TAKE-OFFs

Your needs

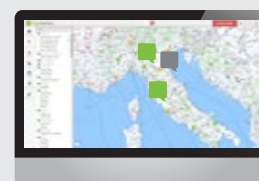
- › Knowing the effective use of vehicles
- › Preventing abuse for false vehicle downtime
- › Correct invoicing according to the real activity
- › Preventing inefficiencies and complaints

Our solution

- › Automated and programmable reports with evidence of all necessary data (hours of vehicle and power-take-off use, km, etc.)
- › Automated documented reporting
- › Complete data also of public holidays and extra-contract hours
- › Possible integration of data with the company's management system



SATELLITE



REAL TIME



AREA ALARM