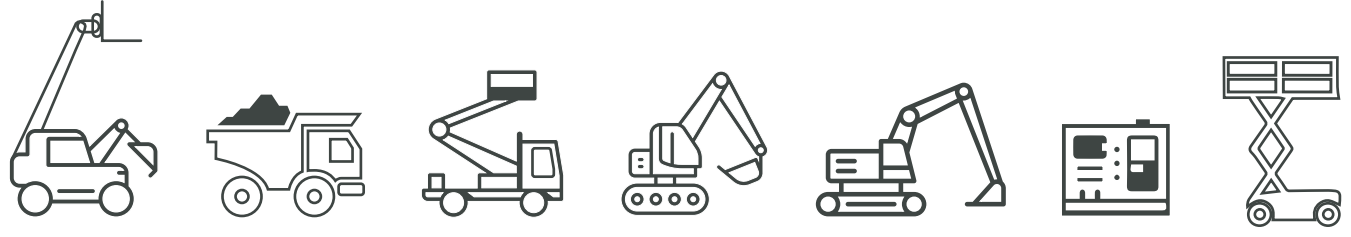




# TARGA FLEET COMMERCIAL HIRE

Total Control Experience:  
control, profitability, security.

Solution dedicated to commercial companies hiring building machinery out: trucks, lifters, cranes and earthmoving machinery.



### + CONTROL

Your vehicles are always under control: where they are, what state they are in.

### - COSTS

Increase the profitability of your hiring out by over **40%**

### + SECURITY

Prevent theft and misuse and recover stolen vehicles

### Your needs

- › Controlling the position of the vehicles in real time and receiving alarms in case of exit from the assigned areas
- › Monitoring consumption and use parameters: km and hours of use (power take-offs)
- › Planning the vehicle scheduled maintenance (automatic alerts when the hour or kilometre threshold is reached)

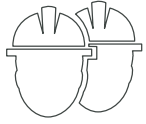
### Our solution

- › Recovery of the stolen vehicles thanks to the Operations Center, available 24/7 and connected to the Police
- › Certification and reporting of the activity carried out towards customers (position/date) with weekly and monthly reports and calculation of the hours worked on public holidays for the automatic invoicing of extra hours

# HOW IT WORKS



Thanks to the installation on board vehicles of a GPRS/SMS GPS (black box), it is possible to know in real time the position and other data (speed, driver, entry/exit from pre-defined areas), consulting a web-based app available on smartphones and tablets too.



## SECURITY

### Your needs

- › Preventing accidents on the work sites
- › Having certified documentation in case of accidents
- › Preventing vehicle misuse

### Our solution

- › Correct monitoring of vehicle maintenance
- › Analytical reports on the vehicle status and possible accidents
- › Complete information on the vehicle use



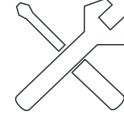
## REAL-TIME TRACKING

### Your needs

- › Preventing the risk of abuse, misappropriation and theft
- › Ensuring compliance with the hiring contractual terms
- › Receiving alarms connected with risky events

### Our solution

- › Monitoring vehicle position and condition in real time
- › Immediate event alerts
- › 24/24 Consultation via mobile app



## MAINTENANCE MANAGEMENT

### Your needs

- › Planning maintenance
- › Recording interventions carried out
- › Preventing vehicle downtime due to poor maintenance
- › Preventing vehicle deterioration and incorrect depreciation

### Our solution

- › Planning maintenance according to the vehicle hire calendar
- › Planning maintenance in compliance with regulations
- › Automatic alerts when the hour/km threshold is reached
- › Recording and history of all maintenance works



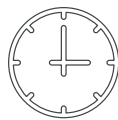
## SATELLITE ANTI-THEFT DEVICE

### Your needs

- › 24/7 support in case of critical issues concerning the vehicles
- › Monitoring movements with the engine off
- › Being quickly connected to the Police

### Our solution

- › Receipt of alarms via internet, email, SMS
- › Blocking/releasing engines from a remote position
- › Alarms for towing/transfers
- › 24/7 Operations Center, connected to the Police



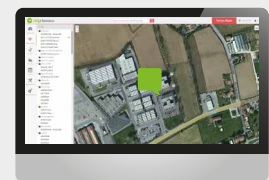
## REPORTING ACTIVITY HOURS & POWER-TAKE-OFFs

### Your needs

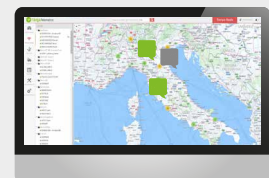
- › Knowing the effective use of vehicles
- › Preventing abuse for false vehicle downtime
- › Correct invoicing according to the real activity
- › Preventing inefficiencies and complaints

### Our solution

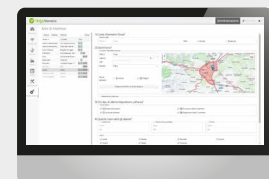
- › Automated and programmable reports with evidence of all necessary data (hours of vehicle and power-take-off use, km, etc.)
- › Automated documented reporting
- › Complete data also of public holidays and extra-contract hours
- › Possible integration of data with the company's management system



SATELLITE



REAL TIME



AREA ALARM